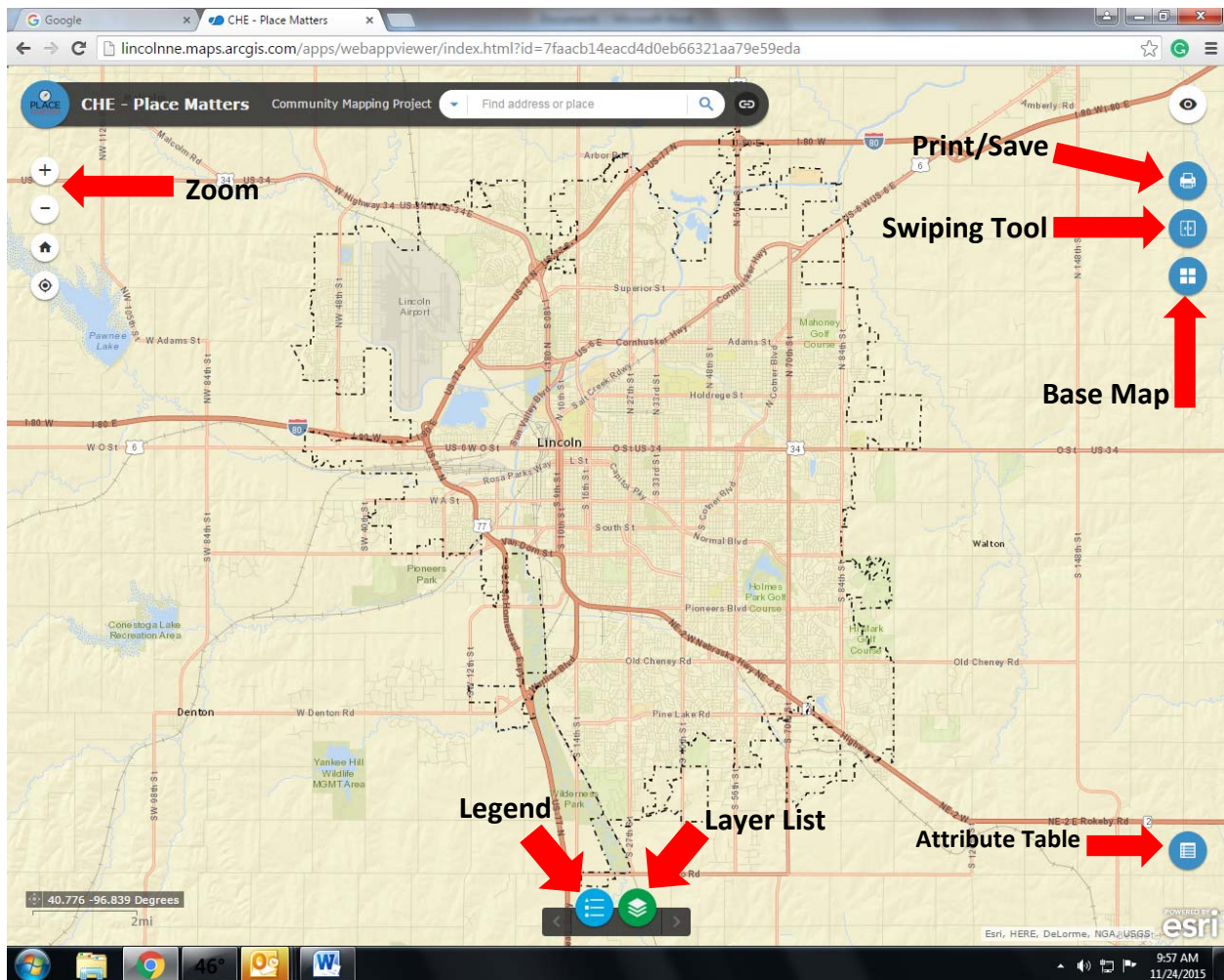




How to Use the Place Matters Online Mapping Tool

When you open the Place Matters Mapping Tool, you should see a map that looks something like this: (If you don't see this, you may need to reset the base maps. See instructions to do that [here](#).) To zoom in or out on the map, use the + and – symbols in the upper left corner of the map. If you have a wheel mouse, you can roll the wheel forward and backward to zoom in and out.



Opening Layers

Each health factor is represented by a layer on the map. You can select and compare layers from the “Layer List.” Click the green button at the bottom of the screen open the Layer List. When you click the button, a Layer List box will pop up on the screen. You can move the Layer List around on the screen by moving your cursor to the black bar at the top of the list. Your cursor will turn into a 4-directional arrow; click and hold to move the Layer List. A key to all the factors on the Layer List appears at the end of these instructions.

Select a layer by clicking in the box to the left of the layer name. The box will turn blue and a white check will appear in the box if the layer is selected.

In addition to the layers you select, we recommend you leave these 2 layers on continuously:

- Excluded Census Tracts
- City Limits 2019

Every layer you check will appear on the map. To maintain clarity of the maps, select only 2 or 3 layers at a time (in addition to the City Limits and Excluded Census Tract layers). Some of the layers, such as Dental Clinics and Primary Medical Care are point maps that show individual locations.

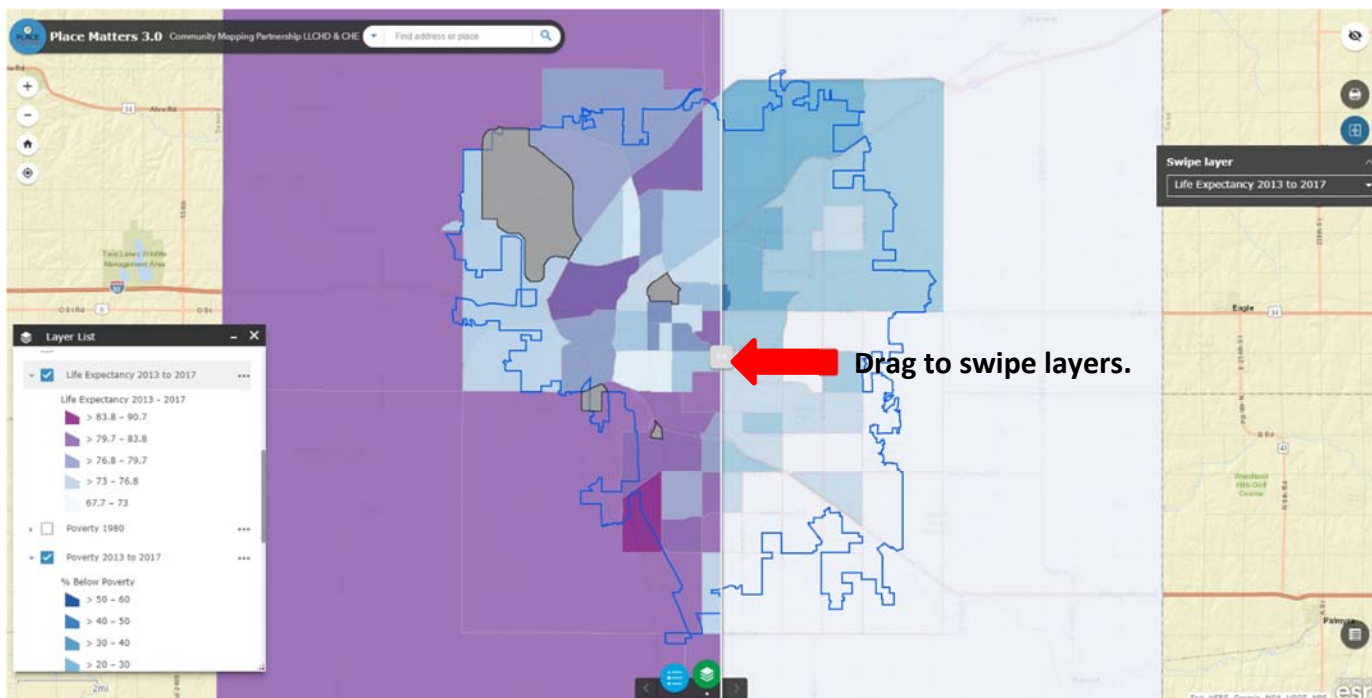
To see what the different colors on a map signify, click on the name of the layer. A list will appear below the layer label. Click on the layer label again to close the list. You can also click on the blue button at the bottom of the screen to open a separate “Legend” pop up.

Swiping Layers

To see how two layers are related, use the Swiping Tool.

First, select the layers you want to see from the Layer List. To open the Swiping Tool, click on the middle of the three buttons on the upper right side of the screen. When you click on the Swiping Tool, a dialogue box will ask which layer you want to swipe from the list of layers you have selected. Click on the arrow on the right side of that box to reveal a drop down menu of all the layers you have selected. Click on the layer you want to swipe. This action turns off that layer. All the other layers you have selected remain visible on the screen.

Hold your cursor anywhere on the vertical white bar on the screen. The cursor will become a 2-directional arrow. Click and hold, then drag the white bar across the screen to display the layer you chose to swipe.



For maximum effect, the layer you choose to swipe should be above the other layers on the Layer List. To move items up or down on the Layer List, click on the arrow to the right of the layer label and select “Move Up” or “Move Down.” You can only move an item one position at a time. To close the swiping tool, select the swipe tool button again. This function applies to all features within this application. If you wish to exit a feature, simply undo the original action.

Changing the Base Map

The program defaults to a street map as the base map. To change the base map, select the third button on the upper right side of the screen to open a gallery of base maps available. If you change the base map, please change it back to “Streets” before you exit the Place Matters Online Mapping Tool.

Printing/Saving

If you would like to save a map you’ve created, click the button with the printer icon in the upper right corner to open a Print dialogue box. Select the paper size and orientation using the “Layout” drop-down menu. Choose the file type using the “Format” drop-down menu. The system defaults to .pdf. When you’ve made your selections, click on the “Print” button and your map will be added to a numbered list of maps within that dialogue box. Click on the item to open it and print it or save it to your computer. Once you’ve saved the maps you’d like to save, use the “Clear Prints” button to delete your maps before you exit the Place Matters Online Mapping Tool.

Individual Census Tract Information

There are two ways to find information for a specific census tract.

1. Click on the census tract on the map. A dialogue box showing the specific data for that census tract for the layers you have selected will pop up. Use the right and left arrows in the blue bar at the top of the box to show the information for each of the layers you have selected.
2. Click on the blue “Attribute Table” button in the lower right corner of the map. This will open a table at the bottom of the screen that includes all the data for each factor. The factors you’ve selected will appear as tabs across the top of the table. Click on any factor to see the data for that factor. The census tract number will be listed on the left side of the table.

Questions?

Contact Marcia White, Program Manager, Community Health Endowment of Lincoln, marcia.white@chelincoln.org, (402) 436-5516.



Key to Layer List Labels

Adult Visits to a Doctor for a Routine Check Up 2016 – percentage of individuals 18 and over who reported they visited a physician within the past year. *Data Source: Centers for Disease Control (CDC) Behavioral Risk Factor Surveillance Survey (BRFSS).*

Changes in Health Insurance Coverage Between 2012 and 2017 –the net change between 2012 and 2017 in the percentage of adults ages 18 – 64 who had current health insurance coverage. *Data Source: U.S. Census Bureau.*

Dental Clinics – (point map) locations of dental clinics. Each clinic has one dot regardless of the number of dentists practicing in the clinic. *Data Source: UNMC Health Professions Tracking Service, Nebraska Department of Health and Human Services.*

First Trimester Care 2013-2015 –percentage of pregnant women who received prenatal care during their first trimester. *Data Source: Lancaster County Vital Records.*

First Trimester Care 2015-2017 –percentage of pregnant women who received prenatal care during their first trimester. *Data Source: Lancaster County Vital Records.*

Healthy Food Access 2019 – the availability of health food options (fruits with no added sugar, vegetables with no added sauce, lean protein, low-fat dairy, and whole grains) combined with vehicle ownership data. *Data Sources: University of Nebraska Extension, U.S. Census Bureau.*

Life Expectancy 2013-2017 –the statistically probable length of time an individual born today can be expected to live based on mortality patterns of the population in a specific census tract given the risk factors in that location. *Data Source: Lancaster County Vital Records.*

Poverty 1980 – percentage of residents living in poverty defined as 100% of the federal poverty threshold as determined by the U.S. Census Bureau. *Data source: U.S. Census Bureau.*

Poverty 2013-2017 – five-year rolling average percentage of residents living in poverty. *Data source: U.S. Census Bureau.*

Primary Care – (point map) locations of primary care, family practice, and internal medicine clinics. Each clinic has one dot regardless of the number of providers practicing in the clinic. *Data Source: Lancaster County Medical Society*

Tobacco Use 2016 – percentage of people age 18 and over who smoke tobacco. *Data Source: CDC BRFSS.*

Youth Fitness 2019 – the percentage of Lincoln Public Schools' students in grades 4 – 8 who passed the Fitnessgram PACER, a multistage aerobic capacity test. *Data Source: Lincoln Public Schools.*